



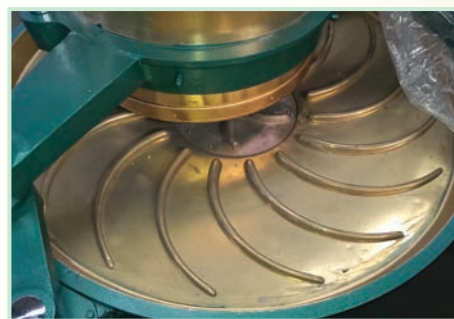
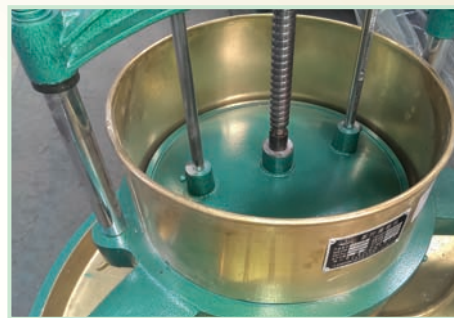
Zenith and You - The Perfect Blend

mini **Tea Rolling** M A C H I N E

Rolling machine is one
of the dedicated machines
required for primary process in
manufacturing Orthodox teas.
It is suitable for both
Green tea and Orthodox tea.



mini Tea Rolling M A C H I N E



Technical Information :

	6CRM-25	6CR-35	6CR-Z45
Size	250*190mm	350*280mm	430*340mm
Rotate speed	55r/min	55r/min	50-55r/min
Output	7kg/h	20-30kg/h	50-140kg/h
Motor	0.37kw	0.55kw	1.1kw
Overall dimension(L*W*H)	700*600*700mm	1050*870*1100mm	1300*1160*1300mm

	6CR- Z55	6CR-55S	6CR-65
Size	550*400mm	550*400mm	650*500mm
Rotate speed	45-50r/min	45-50r/min	42-46r/min
Output	60-160kg/h	60-160kg/h	80-180kg/h
Motor	2.2kw	2.2kw	4kw
Overall dimension(L*W*H)	1312*1200*1385mm	1300*1208*1385mm	1962*1795*1650mm

ZENITH FORGINGS PVT. LTD.

13, Brabourne Road, Kolkata 700 001. (India)

Ph : (+ 91 33) 2242 8083 / 6557 / 6558

Fax : (+ 91 33) 2242 6556. Email : zenith@cal.vsnl.net.in

www.zenithforgings.com

Sales & Services

COIMBATORE, JORHAT, TINSUKIA, TEZPUR, SILIGURI